

LAUNCHPAD AT THE EDGE

Kansas State University's LaunchPad at the Edge District empowers entrepreneurs to start small, dream big and grow to their full potential.



WHAT IS THE LAUNCHPAD?

The LaunchPad, located at 1800 Kimball Avenue in Manhattan, KS, is a collaborative and creative space dedicated to empowering K-State faculty and student entrepreneurs who are looking to launch technology-based businesses with high-growth potential. We also extend our support to other entrepreneurs and startup companies, fostering an environment where innovation thrives.



STRATEGIC LOCATION

Our office spaces boast a prime location in the rapidly growing Edge District, situated along the northern edge of K-State's campus. The Edge strengthens and advances K-State by driving innovation through collaboration.



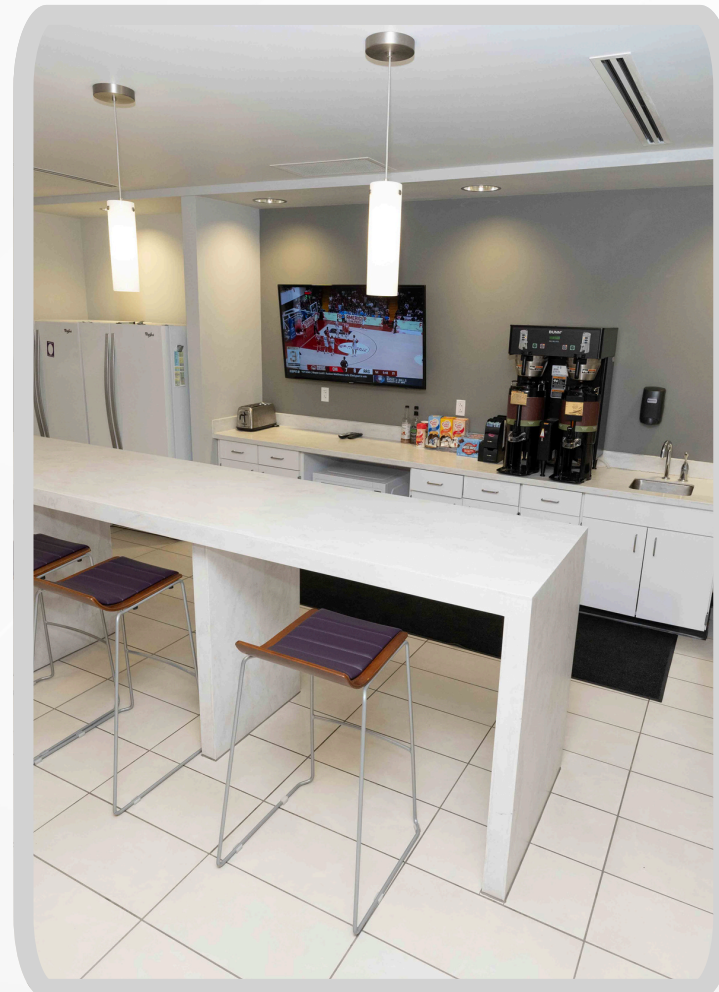
ACCESS TO SUPPORT

Your company would be located near supporting resource providers, such as the ***K-State Research Foundation Technology Commercialization and New Ventures Development Group*** and the ***KSU Foundation Real Estate Management Team***.



ACCESS TO AMENITIES

- Controlled badge access to offices and suites
- Wi-Fi and printing station
- Common area collaborative spaces & kitchenettes
- Video-capable meeting and event spaces
- 24-hour on-site fitness center
- On-site restaurant and coffee shop



LAUNCHPAD GRADUATION PLAN

To fulfill the LaunchPad's objective of supporting new ventures, it's essential to maintain a consistent availability of space for incoming residents. Establishing a phased graduation plan with each company helps us accomplish that goal.



GRADUATION CRITERIA

We will work with new residents to define graduation criteria, subject to evaluation during an annual review, as well as periodic assessments throughout their residency.



PHASES

Start at any phase to suit your company's needs across three convenient locations in the Edge District: 1800 Kimball, 1880 Kimball, and 1960 Kimball.



LAUNCH

Temporary courtesy space offered for early stage seed and pre-seed ventures.
Available space coming soon at 1800 Kimball!



GROW

Reduced market rate space available to early growth-stage companies.
Available space coming soon at 1800 Kimball!

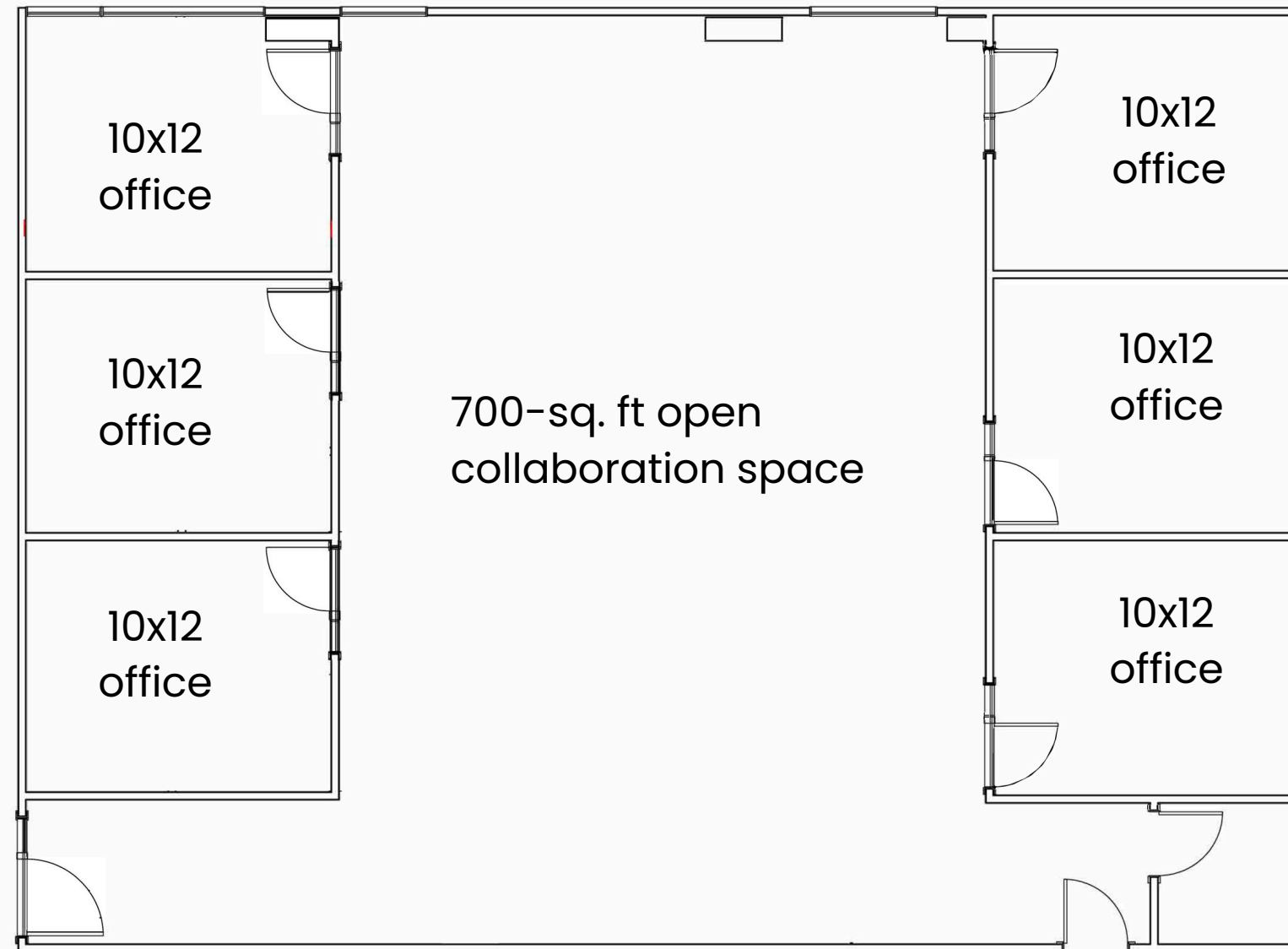


SCALE

Edge leasable space available to late-stage startups ready to scale.
Space available now at 1880 Kimball or 1960 Kimball!

LAUNCHPAD FLOOR PLAN

1800 Kimball Avenue



Located on the 1st floor of 1800 Kimball Avenue, home of the KSU Foundation, the LaunchPad suite offers six individual offices surrounded by 700 square feet of shared, open collaboration space.

Start with the convenience of this temporary courtesy space, then seamlessly transition to reduced-rate accommodations, and ultimately advance into fully leasable office space in the Edge District.

GRADUATED OFFICE SPACE

As your business grows, the demand for additional space will as well. We offer available leasing options at our two prime locations also conveniently located near K-State.

1880 Kimball

Constructed in 2018, this facility provides first-class amenities, including meeting spaces and an onsite, full-service restaurant.

1960 Kimball

Our newest office building offers premium, flexible office space, conference and event space, and a coffee shop.

1880 KIMBALL



1960 KIMBALL



CONTACT US

Ken Williams

KSU Research Foundation Technology

Commercialization & New Ventures

Development Group

Chief Commercialization & Licensing Officer

785-532-3906

ken@k-state.edu

Sherilyn McReil

KSU Foundation

Director of Operations

785-775-2009

sherilynm@ksufoundation.org